



TECHNICAL DATA – ENGLISH

**PANBETON®**

SHUTTERED VERTICAL WOOD

DESIGN : STUDIO LCDA

DIMENSIONS : 3500 x 900 x 15 mm | 102.36" x 35.43" x 0.59"

---

**CONCRETE LCDA**

8 rue Copernic 49240 Avrillé - FRANCE

T. +33 (0) 2 41 33 99 10 F. +33 (0) 9 70 32 65 61

**CONTACT@CONCRETE-BETON.COM**

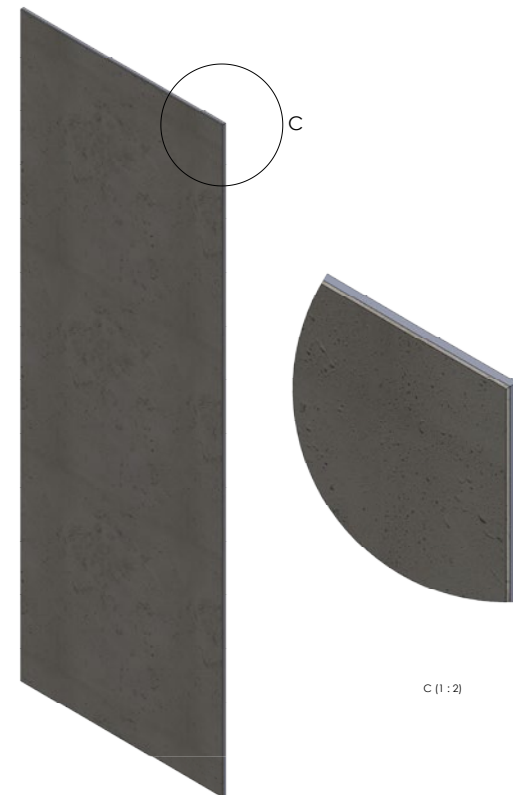
**WWW.CONCRETE-BETON.COM**

## PANBETON®

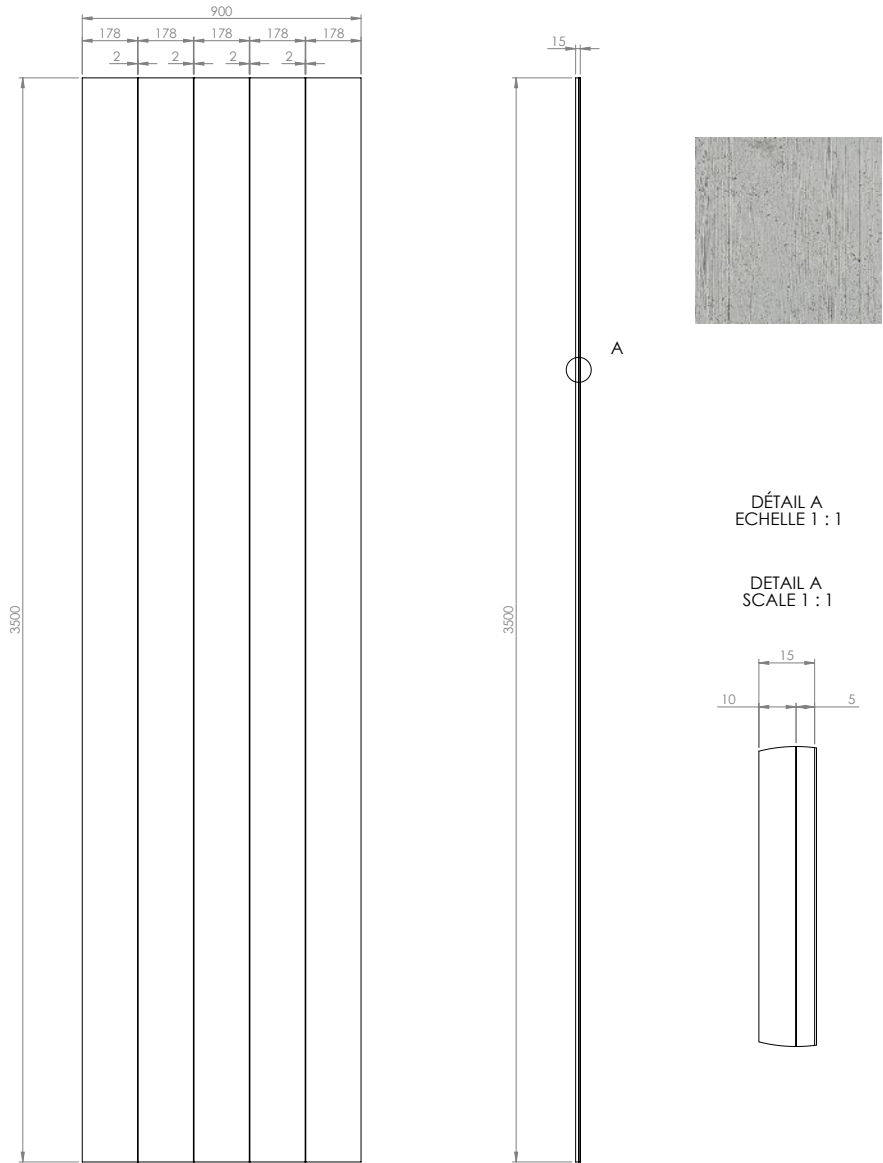
### ULTRA-LIGHTWEIGHT CONCRETE CLADDING

Panbeton® is a unique technology of ultra-lightweight concrete cladding. These slabs are quick and easy to install for wall and ceiling covering. It is the ideal covering to dress up a space with concrete.

- > A large lightweight and easy to cut slab.
- > Front made of genuine raw concrete
- > A simple attachment system
- > Quick installation with little handling
- > Endless customisation possibilities.

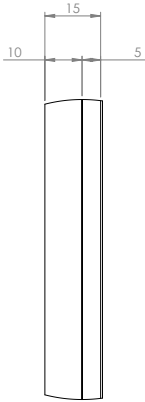


TECHNICAL SHEET (MM)



DÉTAIL A  
ECHELLE 1 : 1

DETAIL A  
SCALE 1 : 1



INFORMATIONS TECHNIQUES :

Matière : Béton fibré ultra haute performance  
Poids : 40 Kg  
Tolérance générale +/- 3 mm

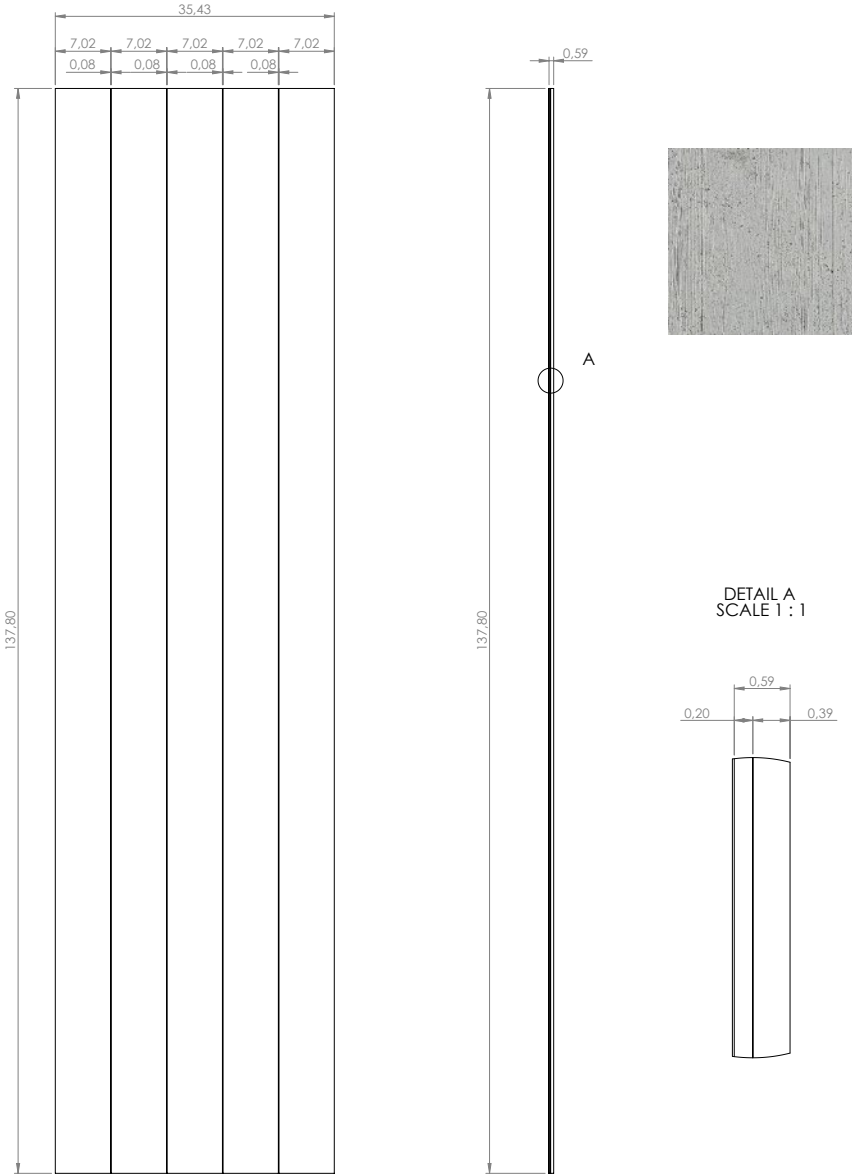
TECHNICAL INFORMATIONS :

Material : Fiber High performance concrete  
Weight : 40 kg  
General tolerance : +/- 3 mm

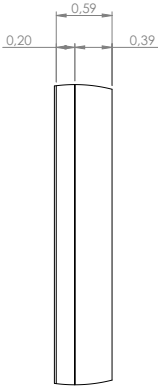
CONCRETE LCDA			8 rue Copernic 49240 Avrillé www.concrete-beton.com	
			Echelle : Scale :	Ep :
Date	Nom Name	N°plan	PANBETON ® BOIS VERTICAL PANBETON ® SHUTTERED VERTICAL WOOD 3500 X 900 X 15 STUDIO LCDA	
Surface : m² Unités : mm Units : mm			Bon pour accord : Agreement for production :	

TECHNICAL SHEET (INCH)

EN



DETAIL A  
SCALE 1 : 1

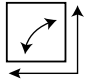

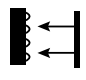





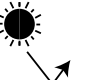



TECHNICAL INFORMATIONS :

Material : Fiber High performance concrete  
Weight : 88 LBS  
General tolerance : +/- 0.12 in

CONCRETE LCDA			8 rue Copernic 49240 Avrillé www.concrete-beton.com	
			Scale :	Ep :
Date	Name	N°plan	PANBETON ® SHUTTERED VERTICAL WOOD 137.80 x 35.43 x 0.59 STUDIO LCDA	
Surface :			Agreement for production :	

Ce dessin est la propriété de la société LCDA. Toute reproduction sans notre accord préalable est interdite.  
This drawing is the property of LCDA. Reproduction without our permission is prohibited.

	<b>DIMENSIONS</b>	3500 x 900 mm   102.36" x 35.43" (General tolerance +/- 3 mm   0.12")
	<b>ORTHOGONALITY</b>	+ /- 1.0 %
	<b>SURFACE AREA</b>	+ /- 1.0 %
	<b>THICKNESS</b>	15 mm   0.59"
	<b>WEIGHT</b>	40 Kg   88 lbs (+/- 20 %)
	<b>WEIGHT PER SQM</b>	12 to 18 kg/m²   25 lbs to 30 lbs /m²
	<b>COMPOSITION</b>	> Fibre-reinforced concrete > Construction panel
	<b>SEALER TREATMENT</b>	As an option (water-borne acrylic base)
	<b>MOUNTING &amp; BONDING</b>	Glue Hybrifix 550 DEN BRAVEN
	<b>SUBSTRATES</b>	Is glued to all substrates (plasterboard, bricks, breeze-blocks, etc.)
	<b>CUTTING</b>	Diamond blade (continuous-rim). outer corner possible, drilling with diamond-coated hole saw...

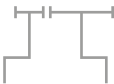
	<b>FIRE CLASSIFICATION</b>	> Euroclass B-s1, d0  > [OPTION] A2-s1d0 (with specific support : gypsum fiber board)  > ASTM E84 : Class A Smoke index : 0 Flame spread index : 0
	<b>HEAT RESISTANCE</b>	Up to 60°C   Up to 140 °F
	<b>THERMAL SHOCK</b>	Resistant
	<b>LIGHT RESISTANCE</b>	No impact
	<b>VOC CLASSIFICATION</b>	A+
	<b>ACOUSTIC</b>	Neutral
	<b>EXCLUDED</b>	Exterior, floor, shower stall. Not suitable for direct and continuous contact with water.

USE THIS ENTIRE DESCRIPTION TO SPECIFY OUR PRODUCTS.

COMPANY NAME		Concrete LCDA
TECHNICAL DATA	MORTAR	<p>Fibre-Reinforced shrinkage-compensating repair mortal.</p> <p>Non-shrinking mortal composed of sand, special cement, fibres and admixtures.</p> <p><b>Compressive strength:</b> Class R2</p> <p><b>Chloride ion content:</b> ≤ 0.05%</p> <p><b>Bonding :</b> ≥ 0.8 MPa</p>
	REINFORCED FIBRE	High Zirconia 17%+ Alkali Resistant Glass Fibre.
	CONSTRUCTION PANEL	Rigid extruded polystyrene foam finished on both sides with a polymer-modified mortar facing, reinforced with a glassfibre mesh fabric.

COMPOSITION

Slice view



5 MM | 0.19"

FIBRE-  
REINFORCED  
CONCRETE

10 MM | 0.39"

CONSTRUCTION  
PANEL



# FINISHES



Light Pitted



Medium Pitted

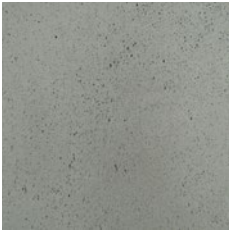


Heavy Pitted

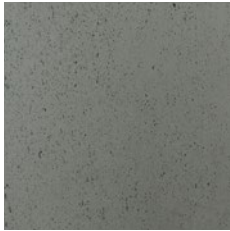
# COLORS



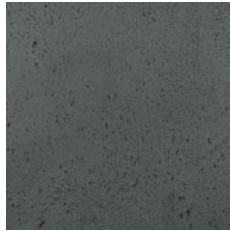
**200** - Natural Grey



**217** - Slate Grey



**216** - Anthracite Grey



**209** - Black



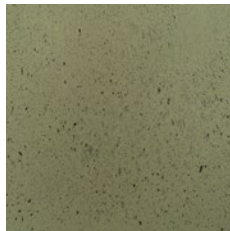
**402** - White



**404** - Stone



**205** - Brown



**269** - Luzerne



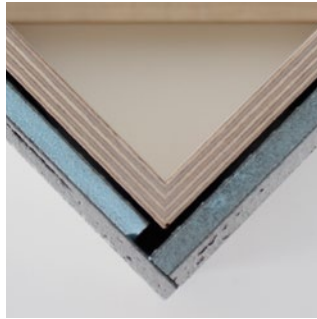
**473** - Ouarzazate



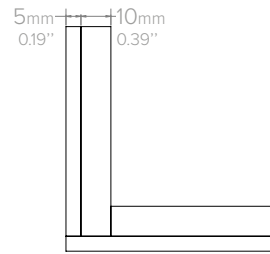
## 1 – BOARD TO BOARD JOIN



Front view

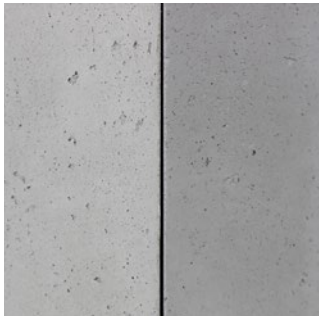


Top view

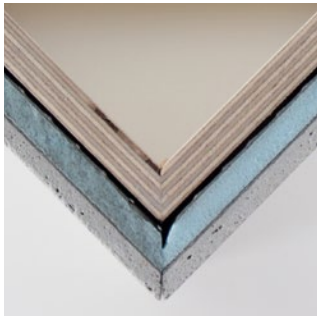


Schema

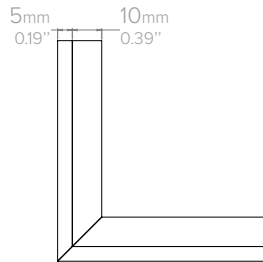
## 2 – OUTER CORNER\*



Front view



Top view

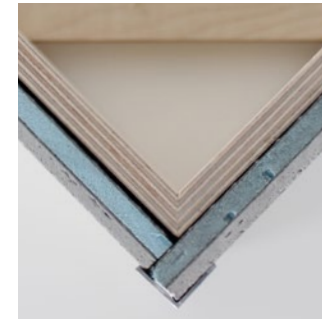


Schema

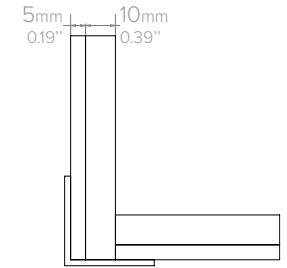
## 3 – TOP CORNER IRON



Front view

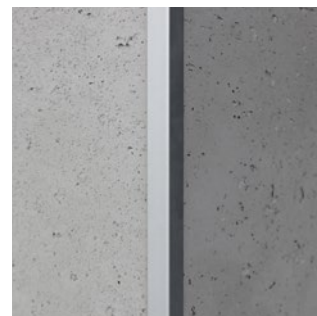


Top view

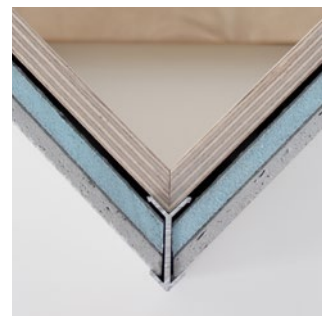


Schema

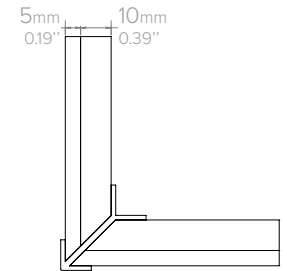
## 4 – IRON CORNER\*



Front view

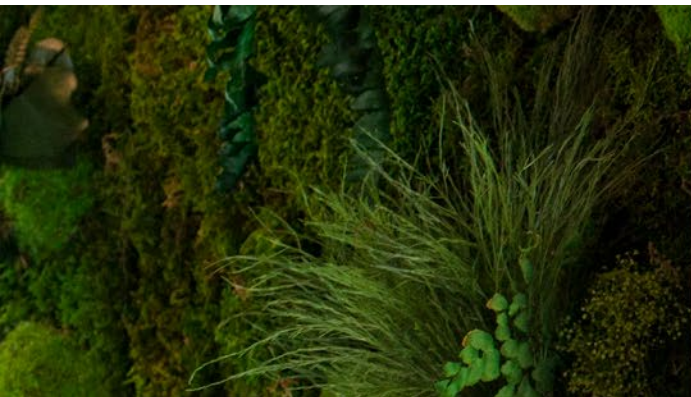


Top view



Schema

\*45 degree cuts can be made at the Concrete LCDA factory (as an option).





# INSTALLATION TOOLS



PROTECTIVE GLOVES



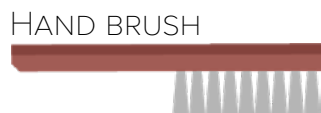
SAFETY HEADPHONES



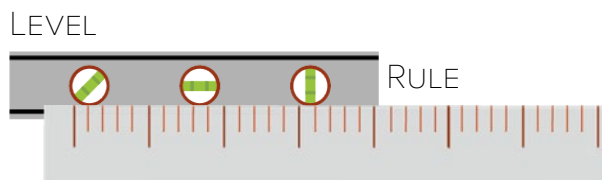
PROTECTIVE GLASSES



DUST MASK



HAND BRUSH

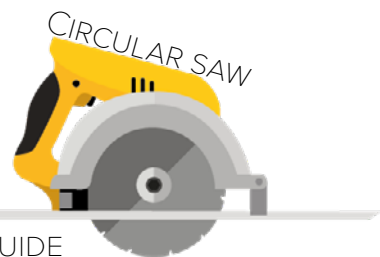


LEVEL

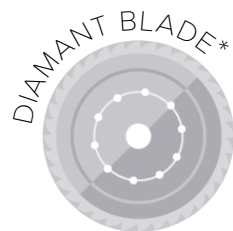
RULE



MALLET



CIRCULAR SAW



DIAMANT BLADE\*

REDUCER RING\*



\*Available in the cut kit (as an option)



GLUE GUN



GLUE HYBRIFIX 550 DEN BRAVEN SEALANTS (recommended)

# INSTALLATION STEPS

FR

1



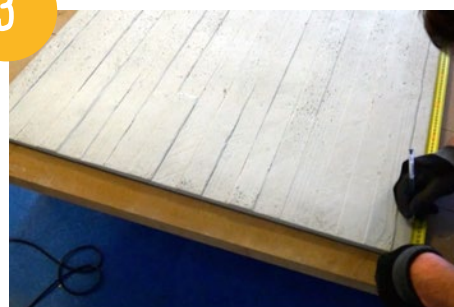
CLEAN THE AREA BEFORE THE INSTALLATION

2



TAKE WALL MEASUREMENTS BEFORE CUTTING THE PANEL

3



COPY YOUR MEASUREMENTS ON THE PANEL

4



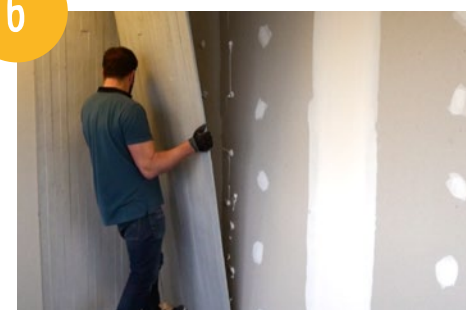
CUTTING WITH THE USE OF A GUIDE RAIL

5



APPLY GLUE ON THE WALL (OR ON THE BACK OF THE PANEL)

6



PLACE THE PANEL STARTING WITH THE BOTTOM

INSTALLATION VIDEOS STEP BY STEP TO SEE

**ON OUR YOUTUBE CHANNEL @CONCRETE LCDA**



> [PANBETON®](#)

> [SLIMBETON®](#)